

## LABELLING

Labelling must adhere to all applicable Australian Standards, New Zealand Standards and Commonwealth, Territory and State Labelling Legislation

Every article must be labelled with following mandatory information

- Brand or Trademark
- Country of origin
- Size
- Fibre Content
- Care Instruction
- Fire hazard Information (for children's nightwear)
- Cleaning instructions for preserving any chemical treatment (for children's nightwear made from fabrics chemically treated to reduce risk of burning)

### General Labelling Requirements

- All the above required mandatory information must be contained on labels conspicuously and securely attached to the article at the time of sale and delivery to the consumer
- All labels have to be permanently attached and be able to withstand the required cleaning treatment throughout the useful life of the article
- The number of labels should be kept to a minimum, whenever possible one label should be used (except for Category 4 children's nightwear, which must have a separate fire hazard information label)
- Multiple piece garments require labelling on all pieces

### Label Positioning

- **Garments that have a neck -**  
The label must be located inside the back of the neck midway between the shoulder seams. If the main label is attached to the inside centre of the back of the neck, then the additional labels may be placed next to the main label, as long as the mandatory information remains conspicuous to the consumer
- **Garments that do not have a neck -**  
The label must be located at the centre back of the waistband or at the top of the centre back seam
- Where a single label is used, the face of the label must include at least fire hazard labelling (where applicable) and size information

**Note:**

- Category 4 children's nightwear must have a separate fire hazard information label.
- Country of origin required for imports to be on the face of the label.
- Where two or more labels are used they shall be attached:
  - Adjacent to each other eg: side by side or one below the other on the back neck facing
  - Place on top of the other, with the uppermost label to include at least fire hazard labelling (where

applicable) and size information.

**Note:** Category 4 children's night wear must have a separate fire hazard information label

- Country of origin required for imports to be on the face of the label.
- The second label has the rest – fibre content, care instructions
- Country of origin and fibre content labelling of imported goods must be clearly visible at the point of sale. If the item is a packaged product, this information must also be displayed on the packaging
- Fire hazard labelling must be clearly visible at the point of sale. For children's nightwear – brand, size, fire hazard, country of origin (if imported), fibre content, care labelling are required on all pieces of multiple piece sets. If the item is a packaged product, all information must also be displayed on the packaging
- For multiple piece sets, each piece must be labelled in accordance with the highest fire hazard category of any piece in the set

### **Brand / Trade Label**

The type and position of the label will be specified in the specification sheet. Harris Scarfe labels are developed with Acotex and Bright Accessories Ltd (or an approved supply source)

### **Content, Care and Country of Origin Labels**

- All care labels to be sourced from Acotex and Bright Accessories Ltd (or as stated)
- The label should have the following mandatory information –
  - Fibre content (by percentage listed in the order of predominance)
  - Country of origin (must be declared on a conspicuous place)
  - Size (must be in a conspicuous place)
  - Care instruction (with prior approval from Harris Scarfe)
- Trims / accessories must also withstand the care treatment
- Care instructions must be in English and be clearly legible. The lettering must be of medium width and be at least 1.5mm high

### **Required Care Label Information**

#### **WASH METHOD –**

- Label must specify if the item should be washed by hand or machine
- Label must state what water temperature should be used such as cold, warm or hot

#### **DRYING METHOD –**

- Care label must state whether an item should be dried by machine or by air
- If machine drying is specified, the label must also state what drying temperature should be used such as low, medium or high

**IRONING INSTRUCTIONS –**

- If ironing is required, the care label must state what temperature should be used
- If ironing would damage the product, a warning is required
- Or is ironing is required on the reverse side

**WARNINGS –**

Manufacturers must warn consumers if any care product normally considered appropriate for a product would in fact, diminish the product's usability, eg: "wash separately or with like colours" items which would stain other garments washed with it

**DRY CLEANING INSTRUCTIONS –**

The dry-cleaning instruction must include the dry-cleaning symbol

For example:

DO NOT DRYCLEAN (X)

DRYCLEAN ONLY (P)

DRYCLEANABLE (P)

DRYCLEANING RECOMMENDED (P)

The dry cleaning instruction must be included on all garments except hosiery, towels, swimwear and underwear

Some garments can not be dry cleaned due to specific trim / accessories like some buttons, fabric prints / dyes, foil prints and fusible interlinings. Manufacturer's responsibility is to identify such garments and label them accordingly. Some examples are:

- Acrylic foam / prints
- Fabrics and elastics with elastane
- Pigment dyes / prints
- Plastisol prints
- Puff prints
- Mother of pearl buttons
- Some sequins, beads and jewel studs

**Care Labels – Cautionary Additional Statements**

In addition to the mandatory care instructions, testing may reveal the need for additional information to be added to the care label to:

Provide additional refurbishing as needed

OR

Provide caution against certain cleaning method

<b>INFORMATION</b>	<b>EXPLANATION</b>
Wash separately or with like colours	Necessary when the garment exhibits staining below specifications
Do not bleach	Necessary when the garment is not colourfast to bleach
Wash inside out	Necessary when surface details of the garment will be damaged by laundering right side out

Reshape	Used in conjunction with a flat dry method when the garment shape could be compromised
Wash before wearing	Where surface dye on the item may cause colour rub-off in the original state
Garment will continue to fade	When garments that have been finished in a way that the additives allow slow loss of colour with every wash
Iron inside out	Necessary when print and embellishments must not be iron on the right side

**FIRE HAZARD WARNING  
- Children's Nightwear  
& limited daywear**

Children's Nightwear MUST be labelled in accordance with the requirements of the mandatory consumer product safety standard for "CHILDREN'S NIGHTWEAR AND LIMITED DAYWEAR HAVING REDUCED FIRE HAZARD" (Based on AS/NZS 1249:1999 as varied by consumer protection notice no. 4 of 2004)


This standard applies to nightwear garments in sizes ranging from 00 to 14.

"Children's nightwear" means garments of a type suitable to night wear, such as pyjamas, pyjama-style overgarments, nightdress, nightshirts, dressing gowns, bathrobes and infant sleep-bags and garments such as all-in-ones and boxer shorts which may be suitable for daywear or nightwear. Does not include any articles of headwear, leggings either with or without a foot, footwear or hand-wear.

Children's Nightwear includes:

- Recognised, exclusively styled nightwear garments
- Knitted all-ones in size 00 to 2 irrespective of style
- Woven all-in-ones in sizes 00 to 2 and all-in-ones above size 2 if they are of a style which identifies them as a nightwear
- Boxer shorts of a loose style commonly used as a nightwear

**Labelling of Children's Nightwear for Fire Hazard**

Classification	Fire Hazard Information Label
Category 1	LOW FIRE DANGER
Category 2	
Category 2	
Category 4	WARNING HIGH FIRE DANGER KEEP AWAY FROM FIRE 

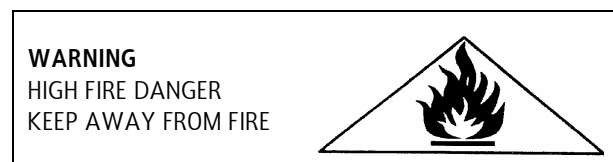
All wording must be clearly legible in upper case, mono-line, geometric, lineal typeface of medium width characters not less than 2.5 mm high. The word **WARNING** must be in bold, uppercase, typeface.

**Category 1, 2 and 3 label:**

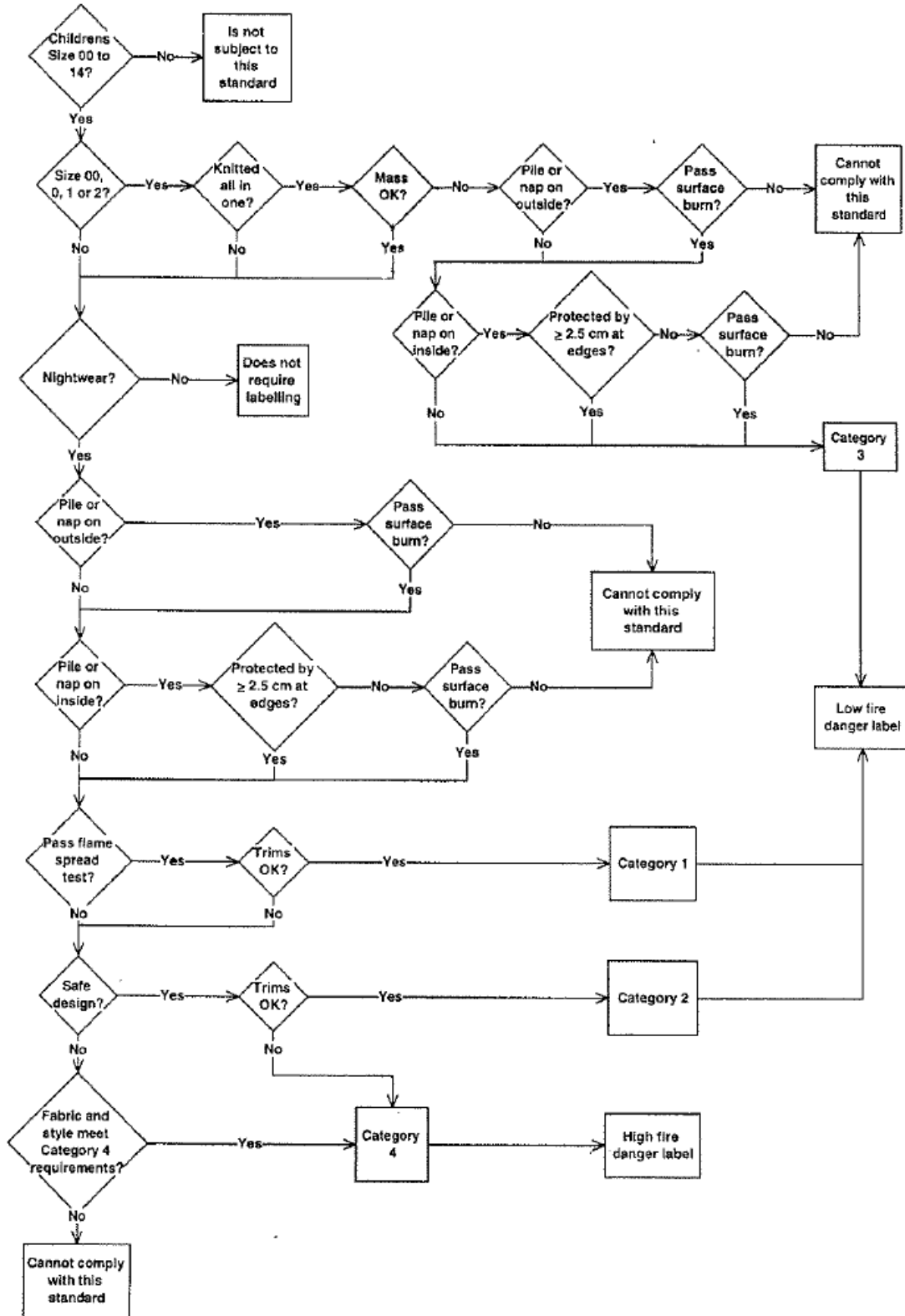
- The words on labels for category 1, 2, and 3 must be printed in black on a white background
- The works may appear on more than one line

**Category 4 label:**

- The design of the symbol used on the labels for category 4 garments must be as shown in above table
- The triangle shall be not less than 17mm in height and not less than 33 mm in length at the base
- The words and the symbol on labels for category 4 garments must be printed in black on a red label. The red label colour must be R 13 signal red specified in AS 2700 or 537 signal red as specified in NZS 7702. When visually rated with the grey scale for assessing change in colour complying with ISO Part A02 the numerical rating of colour must be not less than 4.
- Each statement on Category 4 labels must commence on a separate line. Some examples are as follow:



AS/NZS 1249:1999 contains the following flow chart as a guide for determining the categories for Children's Nightwear



**SIZE AND SIZING INFORMATION**

The size of each garment will be predominantly positioned on the brand label, using a numerical or alphabetic notation

eg: size 10 or size XL

It is a general requirement for labels to also to state “To Fit” measurements. The “To Fit” information will either be presented by a specific size or in chart form as specified following:

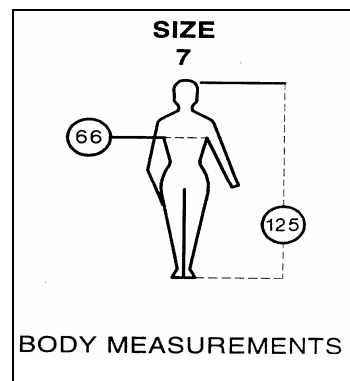
**BODY DIMENSIONS - INFANTS**

The following table provides the body dimensions for infants garments

SIZE	00000	0000	000	00
Height (cm)	50	56	62	68
To fit weight (kg)	3	4	6	8
To fit chest (cm)	-	-	-	-
Age (month)	Prem	Newborn	0-3	3-6

SIZE	0	1	2	3
Height (cm)	76	84	92	100
To fit weight (kg)	10	12	-	-
To fit chest (cm)	-	-	56	58
Age (month)	6-9	9-12	12-24	24-36

**Size Label**



<b>SIZE 7</b>	
<b>To Fit</b>	
<b>Height</b>	<b>125 cm</b>
<b>Chest</b>	<b>66 cm</b>

**SUMMARY OF LEGAL LABELLING REQUIREMENTS BY PRODUCT**

Product	Care	Country of Origin	Material Disclosure	Brand
Wearing Apparel	√	√	√	√
Gloves / Mittens	√ Appropriate to individual fibre content	√	√	√
Scarves / Hats (Head measurements)	√ Appropriate to individual fibre content	√	√	√
Neckties	NO	√	√	√
Handbags	Not required	√	√	√
Wallets	NO	√	Imitation Leather and imitation Suede only	NO
Shoes	NO	√	Imitation Leather and Suede Only	NO
Belts	NO	√	√	√
Jewellery	NO	√	NO	NO
Footwear	√	√	√	√

**PREFERRED CARE INSTRUCTION**

The below listed care instructions are for **GUIDANCE ONLY**. Care labels may vary depending on fabric test reports and any embellishments on the garment. In accordance with Australian Standards Association, care label lettering must be no less than **15mm** in height

<b>HSCI 1</b>	SPONGE CLEAN ONLY WITH SOFT DAMP CLOTH DO NOT DRY CLEAN (X) DO NOT IRON
<b>HSCI 2</b>	DRY CLEAN ONLY (P) COOL IRON UNDER COTTON CLOTH
<b>HSCI 3</b>	WASH SEPARATELY COOL HAND OR GENTLE MACHINE WASH COLD RINSE DO NOT SOAK OR BLEACH DO NOT TUMBLE DRY EASE INTO SHAPE AND DRY FLAT IN SHADE WARM IRON UNDER COTTON CLOTH DRY CLEANABLE (P)

<b>HSC 4</b>	<p>WASH SEPARATELY  COOL HAND OR  GENTLE MACHINE WASH  COOL RINSE  DO NOT SOAK OR BLEACH  DO NO TUMBLE DRY  EASE INTO SHAPE AND  DRY FLAT IN SHADE  COOL IRON INSIDE OUT  DO NOT IRON PRINT OR BEADING  DO NO DRY CLEAN (X)</p>
<b>HSC 5</b>	<p>WASH SEPARATELY  COOL HAND WASH IN MILD DETERGENT  RINSE THOROUGHLY  DO NOT SOAK, BLEACH OR RUB  DO NOT SPIN DRY  GENTLY SQUEEZE OUT EXCESS WATER  EASE INTO SHAPE AND DRY FLAT IN SHADE  DO NOT TUMBLE DRY  COOL IRON ON REVERSE SIDE  DRY CLEANABLE (P)</p>
<b>HSC 6</b>	<p>WASH SEPARATELY  COOL HAND WASH  IN MILD DETERGENT  COOL RINSE WELL  DO NOT SOAK OR BLEACH  DO NOT TUMBLE DRY  DRIP DRY IN SHADE  DO NOT IRON  DO NOT DRY CLEAN (X)</p>
<b>HSC 7</b>	<p>WASH SEPARATELY  COOL HAND WASH IN MILD DETERGENT  RINSE THOROUGHLY  DO NOT SOAK OR BLEACH  SQUEEZE OUT EXCESS WATER  TO RETAIN CRINKLE, LEAVE CRUSHED  AND LAY FLAT TO DRY IN SHADE  DO NOT TUMBLE DRY  DO NOT IRON  DO NOT DRY CLEAN (X)</p>
<b>HSC 8</b>	<p>WASH SEPARATELY  COOL HAND WASH  DO NOT SOAK OR BLEACH  DO NOT TUMBLE DRY  EASE INTO SHAPE  DRY FLAT IN SHADE  WARM IRON UNDER COTTON CLOTH  DRY CLEANABLE (P)</p>

<b>HSC 9</b>	<p>WASH SEPARATELY          COOL HAND WASH IN MILD DETERGENT          THOROUGHLY DISSOLVED          RINSE THOROUGHLY          DO NOT SOAK OR BLEACH          DO NOT TUMBLE DRY          EASE INTO SHAPE AND          DRY FLAT IN SHADE          WARM IRON          DRY CLEANABLE (P)</p>
<b>HSC 10</b>	<p>WASH SEPARATELY          COOL HAND OR          GENTLE MACHINE WASH          COLD RINSE          DO NOT SOAK OR BLEACH          DO NOT TUMBLE DRY          EASE INTO SHAPE AND          DRY FLAT IN SHADE          WARM IRON UNDER COTTON CLOTH          DO NOT DRY CLEAN (X)</p>
<b>HSC 11</b>	<p>WASH SEPARATELY          COOL HAND OR          GENTLE MACHINE WASH          DO NOT SOAK OR BLEACH          MAY BE TUMBLE DRIED COOL          DRY IN SHADE          COOL IRON          DRY CLEANABLE (P)</p>
<b>HSC 12</b>	<p>COOL HAND WASH SEPARATELY          IN MILD DETERGENT – THOROUGHLY DISSOLVED          DO NOT SOAK, BLEACH OR RUB          RISE THOROUGHLY          DO NOT SPIN DRY          DO NOT TUMBLE DRY          SQUEEZE OUT EXCESS WATER          EASE INTO SHAPE AND          DRY FLAT IN SHADE          COOL IRON          DRY CLEANABLE (P)</p>
<b>HSC 13</b>	<p>WASH SEPARATELY          COOL GENTLE MACHINE WASH          IN MILD DETERGENT – THOROUGHLY DISSOLVED          RINSE THROUGHLY          LIGHT SPIN DRY          DO NOT SOAK OR BLEACH          DO NOT TUBMLE DRY          DRY IN SHADE          COOL IRON ON REVERSE SIDE          DO NOT DRY CLEAN (X)</p>

<b>HSC 14</b>	<p>COOL HAND WASH  DO NOT SOAK OR BLEACH  LIGHT SPIN DRY  DO NOT TUMBLE DRY  DRY IN SHADE  WARM IRON UNDER DAMP CLOTH  DRY CLEANABLE (P)</p>
<b>HSC 15</b>	<p>WASH SEPARATELY  COOL HAND WASH  DO NOT SOAK OR BLEACH  LIGHT SPIN DRY  DO NOT TUMBEL DRY  DRY IN SHADE  WARM IRON UNDER DAMP CLOTH  DRY CLEANABLE (P)</p>
<b>HSC 16</b>	<p>COOL HAND WASH  RINSE WEL  LIGHT SPIN DRY  DO NOT SOAK OR BLEACH  DO NOT TUMBLE DRY  DRY IN SHADE  COOL IRON  DRY CLEANABLE (P)</p>
<b>HSC 17</b>	<p>WASH SEPARATELY  COOL HAND WASH IN MILD DETERGENT  RINSE THOROUGHLY  LIGHT SPIN DRY  DO NOT SOAK OR BLEACH  DO NOT TUMBLE DRY  DRY IN SHADE  COOL IRON  DRY CLEANABLE (P)</p>
<b>HSC 18</b>	<p>WASH SEPARATELY  COOL GENTLE MACHINE WASH  DO NOT SOAK OR BLEACH  DO NOT TUMBLE DRY  DRY IN SHADE  COOL IRON ONLY IF NEEDED  DO NOT DRY CLEAN (X)</p>
<b>HSC 19</b>	<p>COOL GENTLE MACHINE WASH  DO NOT SOAK OR BLEACH  DO NOT TUMBLE DRY  DRY IN SHADE  COOL IRON ONLY IF NEEDED  DO NOT DRY CLEAN (X)</p>

<b>HSC 20</b>	<p>WASH SEPARATELY BEFORE USE          COOL GENTLE MACHINE WASH          DO NOT SOAK OR BLEACH          DO NOT TUMBLE DRY          DRY IN SHADE          WARM IRON INSIDE OUT          DO NOT IRON ON RIGHT SIDE          DO NOT DRY CLEAN (X)</p>
<b>HSC 21</b>	<p>WASH SEPARATELY BEFORE USE          COOL GENTLE MACHINE WASH          DO NOT SOAK OR BLEACH          DO NOT TUMBLE DRY          DRY IN SHADE          WARM IRON INSIDE OUT          DRY CLEANABLE (P)</p>
<b>HSC 22</b>	<p>WASH SEPARATELY          COOL HAND OR GENTLE MACHINE WASH          COOL RINSE          DO NOT SOAK OR BLEACH          DO NOT TUMBLE DRY          DRY FLAT IN SHADE          COOL IRON          DRY CLEANABLE (P)</p>
<b>HSC 23</b>	<p>COLD HAND OR GENTLE MACHINE WASH          COLD RINSE          DO NOT SOAK OR BLEACH          DO NOT TUMBLE DRY          DRY IN SHADE          COOL IRON INSIDE OUT          DO NOT IRON PRINT          DO NOT DRY CLEAN (X)</p>
<b>HSC 24</b>	<p>COOL HAND WASH          DO NOT SOAK OR BLEACH          DO NOT TUMBLE DRY          LINE DRY IN SHADE          DO NOT IRON          DO NOT DRY CLEAN (X)</p>
<b>HSC 25</b>	<p>COOL HAND OR GENTLE MACHINE WASH          DO NOT SOAK OR BLEACH          DO NOT TUMBLE DRY          EASE INTO SHAPE          DRY FLAT IN SHADE          COOL IRON          DO NOT DRY CLEAN (X)</p>

<b>HSC 26</b>	<p>WASH SEPARATELY          COOL HAND OR GENTLE MACHINE WASH          DO NOT SOAK OR BLEACH          DO NOT TUMBLE DRY          EASE INTO SHAPE          DRY FLAT IN SHADE          COOL IRON          DO NOT DRY CLEAN (X)</p>
<b>HSC 27</b>	<p>WASH SEPARATELY          COLD HAND OR MACHINE WASH          DO NOT SOAK OR BLEACH          DO NOT TUMBLE DRY          DRY IN SHADE          WARM IRON          DRY CLEANABLE (P)</p>
<b>HSC 28</b>	<p>COLD HAND OR GENTLE MACHINE WASH          DO NOT SOAK OR BLEACH          DO NOT TUMBLE DRY          DRY IN SHADE          WARM IRON          DO NOT DRY CLEAN (X)</p>
<b>HSC 29</b>	<p>WASH SEPARATELY          COLD HAND OR GENTLE MACHINE WASH          DO NOT SOAK OR BLEACH          DO NOT TUMBLE DRY          DRY IN SHADE          WARM IRON          DRY CLEANABLE (P)</p>
<b>HSC 30</b>	<p>COLD HAND OR GENTLE MACHINE WASH          DO NOT SOAK OR BLEACH          DO NOT TUMBLE DRY          DRY IN SHADE          WARM IRON          DRY CLEANABLE (P)</p>
<b>HSC 31</b>	<p>COLD MACHINE WASH SEAPRATELY BEFORE USE          TURN INSIDE OUT TO WASH          THIS COLOUR WILL CONTINUE TO FADE          COLD MACHINE WASH SEPARATELY          DO NOT SOAK OR BLEACH          DO NOT TUMBLE DRY          DRY IN SHADE          WARM IRON          DO NOT DRY CLEAN (X)</p>

<b>HSC 32</b>	COOL HAND WASH DO NOT BLEACH OR RUB DO NOT TUMBLE DRY DRY FLAT IN SHADE COOL IRON DRY CLEANABLE (P)
<b>HSC 33</b>	WASH SEPARATELY COOL HAND WASH DO NOT BLEACH OR RUB DO NOT TUMBLE DRY DRY FLAT IN SHADE COOL IRON DRY CLEANABLE (P)
<b>HSC 34</b>	COOL HAND WASH IN MILD DETERGENT DO NOT SOAK, BLEACH OR RUB DO NOT TUMBLE DRY DRY FLAT IN SHADE COOL IRON INSIDE OUT DO NOT IRON PRINT DO NOT DRY CLEAN (X)
<b>HSC 35</b>	WASH SEPARATELY COOL HAND WASH IN MILD DETERGENT DO NOT SOAK, BLEACH OR RUB DO NOT TUMBLE DRY DRY FLAT IN SHADE COOL IRON INSIDE OUT DO NOT IRON PRINT DO NOT DRY CLEAN (X)
<b>HSC 36</b>	WASH SEPARATELY COOL HAND OR GENTLE MACHINE WASH DO NOT SOAK, BLEACH OR RUB DO NOT TUMBLE DRY DRY IN SHADE COOL IRON DRY CLEANABLE (P)
<b>HSC 37</b>	COOL HAND OR GENTLE MACHINE WASH COOL RINSE DO NOT SOAK, BLEACH OR RUB DO NOT TUMBLE DRY DRY FLAT IN SHADE COOL IRON INSIDE OUT DO NOT IRON PRINT DO NOT DRY CLEAN (X)

<b>HSC 38</b>	<p>WASH SEPARATELY  COOL HAND OR GENTLE MACHINE WASH  COOL RINSE  DO NOT SOAK, BLEACH OR RUB  DO NOT TUMBLE DRY  DRY FLAT IN SHADE  COOL IRON INSIDE OUT  DO NOT IRON PRINT  DO NOT DRY CLEAN (X)</p>
<b>HSC 39</b>	<p>COOL HAND WASH IN MILD DETERGENT  DO NOT SOAK, BLEACH OR RUB  DO NOT SPIN DRY  GENTLY SQUEEZE OUT EXCESS WATER  EASE INTO SHAPE AND  DRY FLAT IN SHADE  DO NOT TUMBLE DRY  DO NOT IRON  DO NOT DRY CLEAN (X)</p>
<b>HSC 40</b>	<p>WASH SEPARATELY  COOL HAND WASH  IN APPROVED WOOL DETERGENT  RINSE THOROUGHLY  LIGHT SPIN DRY  DO NOT SOAK OR BLEACH  DO NOT TUMBLE DRY  EASE INTO SHAPE AND  DRY FLAT IN SHADE  COOL IRON UNDER COTTON CLOTH  DRY CLEANABLE (P)</p>
<b>HSC 41</b>	<p>WASH SEPARATELY  COOL HAND WASH IN MILD DETERGENT  RINSE THOROUGHLY  DO NOT SOAK OR BLEACH  DO NOT TUMBLE DRY  SQUEEZE OUT EXCESS WATER  TWIST GENTLY IN LINE WITH PLEATS  LEAVE TWISTED TO RETAIN CRINKLE  DRY FLAT IN SHADE  DO NOT IRON  DO NOT DRY CLEAN (X)</p>
<b>HSC 42</b>	<p>DRY CLEAN ONLY  IN MYLON BAG (P)  COOL IRON ON REVERSE SIDE  DO NOT IRON BEADING</p>

<b>HSC 43</b>	<p>COOL HAND WASH IN MILD DETERGENT  RINSE THOROUGHLY  DO NOT SOAK OR BLEACH  DO NOT TUMBLE DRY  SQUEEZE OUT EXCESS WATER  EASE INTO SHAPE AND DRY FLAT IN SHADE  COOL IRON ON REVERSE SIDE  DO NOT IRON BEADING OR TRIM  DO NOT DRY CLEAN (X)</p>
<b>HSC 44</b>	<p>COOL HAND WASH IN MILD DETERGENT  DO NOT SOAK OR BLEACH  DO NOT SPIN DRY  GENTLY SQUEEZE OUT EXCESS WATER  EASE INTO SHAPE AND DRY FLAT IN SHADE  DO NOT TUMBLE DRY  COOL IRON UNDER COTTON CLOTH  DO NOT DRY CLEAN (X)</p>
<b>HSC 45</b>	<p>DRY CLEAN ONLY (P)  WARM IRON UNDER COTTON CLOTH</p>
<b>HSC 46</b>	<p>WASH SEPARATELY BEFORE USE  COLD GENTLE MACHINE WASH SEPARATELY  DO NOT SOAK OR BLEACH  DO NOT TUMBLE DRY  DRY FLAT IN SHADE  COOL IRON ONLY IF NEEDED  DO NOT DRY CLEAN (X)</p>
<b>HSC 47</b>	<p>WASH SEPARATELY BEFORE USE  COOL HAND WASH IN MILD DETERGENT  DO NOT SOAK OR BLEACH  DO NOT TUMBLE DRY  DRY FLAT IN SHADE  COOL IRON ON REVERSE SIDE  DO NOT IRON BEADING OR LACE TRIM  DO NOT DRY CLEAN (X)</p>
<b>HSC 48</b>	<p>COLD HAND OR GENTLE MACHINE WASH  COOL RINSE  DO NOT BLEACH OR SOAK  DO NOT TUMBLE DRY  DRY IN SHADE  COOL IRON  DRY CLEANABLE (P)</p>

<b>HSC 49</b>	<p>COOL HAND WASH IN MILD DETERGENT  DO NOT SOAK OR BLEACH  DO NOT SPIN DRY  GENTLY SQUEEZE OUT EXCESS WATER  EASE INTO SHAPE AND DRY FLAT IN SHADE  DO NOT TUMBEL DRY  COOL IRON UNDER COTTON COTH  DRY CLEANABLE (P)</p>
<b>HSC 50</b>	<p>WASH SEPARATELY  COOL GENTLE MACHINE WASH  DO NOT SOAK OR BLEACH  MAY BE TUMBLE DRIED - WARM  DRY IN SHADE  WARM IRON  DRY CLEANABLE (P)</p>
<b>HSC 51</b>	<p>WASH SEPARATELY  COOL MACHINE WASH  DO NOT SOAK OR BLEACH  DO NOT TUMBLE DRY  DRY IN SHADE  WARM IRON  DRY CLEANABLE (P)</p>
<b>HSC 52</b>	<p>COOL MACHINE WASH  DO NOT SOAK OR BLEACH  DO NOT TUMBLE DRY  DRY IN SHADE  WARM IRON  DRY CLEANABLE (P)</p>
<b>HSC 53</b>	<p>COOL HAND OR GENTLE MACHINE WASH  DO NOT SOAK OR BLEACH  MAY BE TUMBLE DRIED – COOL  DRY IN SHADE  COOL IRON  DRY CLEANABLE (P)</p>
<b>HSC 54</b>	<p>WASH SEPARATELY  COOL HAND WASH IN MILD DETERGENT  DO NOT SOAK OR BLEACH  DO NOT SPIN DRY  SQUEEZE OUT EXCESS WATER  DRY FLAT IN SHADE  COOL IRON ON REVERSE SIDE  DO NOT IRON BEADING OR LACE TRIM  DO NOT DRY CLEAN (X)</p>

<p><b>HSC 55</b></p>	<p>HAND ON WELL SHAPED HANGER  STORE WHERE ARE CAN CIRCULATE  STORE SWAY FROM DIRECT SUNLIGHT  DO NOT USE ADHESIVE TAGS ON SURFACE  DRY NATURALLY  DO NOT PLAVE NEAR FIRE OR HEATER  OIL AND GREASE STAINS REQUIRE SPECIALIST CLEANING  DO NOT SPPLY ANY HOUSEHOLD CLEANING FLUIDS,  CREAMS OR SOAPS  DO NOT WASH, STEAM OR IRON  MAY BE TREATED WITH STAIN RESISTANT TREATMENTS  BRUSH NAP WITH SPONGE OR SOFT CLOTHES BRUSH  DO NOT USE WIRE OR HARD BRISTLE BRUSH  THIS GARMENT IS ONLY TO BE CLEANED BY A SPECIALIST  LEATHER / SUEDE CLEANER  COLOUR VARIATION CAN OCCUR WITH GENERAL WEAR  AND CLEANING</p>
<p><b>HSC 56</b></p>	<p>COOL HAND OR GENTLE MACHINE WASH  COOL RINSE  DO NOT SOAK OR BLEACH  DO NOT TUMBLE DRY  DRY IN SHADE  WARM IRON INSIDE OUT  DO NOT DRY CLEAN (X)</p>
<p><b>HSC 57</b></p>	<p>WASH SEPARATELY  COOL HAND OR GENTLE MACHINE WASH  DO NOT SOAK OR BLEACH  DO NOT TUMBLE DRY  DRY IN SHADE  WARM IRON INSIDE OUT  DO NOT DRY CLEAN (X)</p>
<p><b>HSC 58</b></p>	<p>SOME COLOUR MAY RUB OFF ONTO LIGHT  CLOTHING AND FURNITURE  THIS COLOUR WILL CONTINUE TO FADE  WASH SEPARATELY BEFORE USE  COLD GENTLE MACHINE WASH SEPARATELY  DO NOT SOAK OR BLEACH  DO NOT TUMBLE DRY  DRY IN SHADE  COOL IRON IF NEEDED  DO NOT DRY CLEAN (X)</p>
<p><b>HSC 59</b></p>	<p>WASH SEPARATELY BEFORE USE  THIS COLOUR WILL CONTINUE TO FADE  COOL HAND OR GENTLE MACHINE WASH IN MILD  DETERGENT  DO NOT SOAK OR BLEACH  DO NOT TUMBLE DRY  DRY IN SHADE  COOL IRON INSIDE OUT  DO NOT DRY CLEAN (X)</p>

**LABEL SUPPLIERS**

**Acotex Far East Ltd**

3/F Fabrico Industrial Building  
78-84 Kwai Cheong Road,  
Kwai Chung  
N.T., Hong Kong  
Telephone: +852 2412 8100  
Facsimile: +852 2415 3104  
[webmaster@acotex.com](mailto:webmaster@acotex.com)  
<http://www.acotex.com>

**Bright Accessories Ltd**

Room H, 23/F.,  
Koon Wo Industrial Building,  
63-75 Ta Chuen Ping Street,  
N.T., Hong Kong  
Telephone: +852 2413 0255  
Facsimile: +852 2415 1317  
Contact – Cathy Law / Ryan  
[cathy@brightaccessories.com](mailto:cathy@brightaccessories.com)